

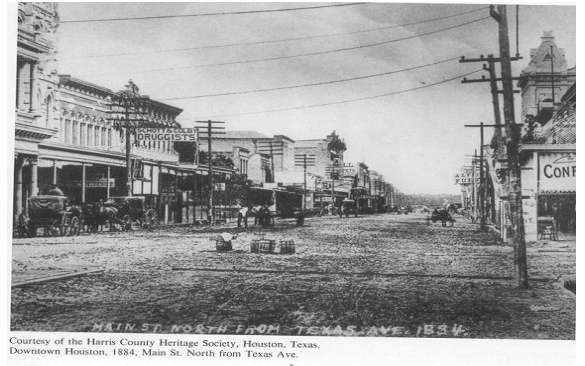


Lumbermen's Association of Texas & Louisiana

Serving Dealers. Supporting Builders. Since 1886.

Celebrate your history ... preserve the past

Plan now to include YOUR company history in
the 125 Year HISTORY of LAT
and
70 Year HISTORY of LBMDA!



LAT is preparing to publish a 125 year history of the association and ALL the members – both dealers and associates – *to commemorate the 125th anniversary of LAT – and the 70th anniversary of LBMDA - in 2011.*

In addition to the histories of the Texas and Louisiana Associations, the book will include histories of every member who wishes to submit text and photographs on their businesses.

- Each member may purchase one or more pages for only \$100 per page, payable upon submission of pages
- **Submissions being accepted NOW!**

Begin work now on your page(s) for this *once in a lifetime* anniversary publication – celebrating you, your business, and 125 years of LAT in Texas – and 70 years of LBMDA (10 years with LAT) in Louisiana!

See reverse side for more information



Details and Publishing tips –

In addition to any photographs you wish to submit: **(you may send original photo to LAT office and we will return them, but we PREFER jpg files emailed to Barbara @lat.org)**

1. include the founding date of your business,
2. owners and name changes, family names and relationships
3. city locations and changes over the history of your business,
4. current size and types of material sales of your business (retail / contractor, sales volume and / or number of employees),
5. unique characteristics of your business, community, and owners – past and present.
6. Payment by check must be submitted to LAT when your company history is sent. Checks only - \$100 per page.
7. Copy must fit into a minimum of a 8" wide by 10" high page, using a 10 point Tahoma font.
8. LAT reserves the right to edit copy to fit as needed.
9. At least one photo file image should be included of your business. More images are encouraged!
10. All images will be printed as black & white.
11. All material must be submitted electronically – as a separate word document and separate jpg files for each photo / image - email to Barbara@lat.org
12. 2010 LAT dues must be paid on or before submission of materials.
13. 2011 LAT dues must be paid before January 15, 2011 for pre-press inclusion.
14. LAT dealer & associate members whose dues are paid for BOTH 2010 and 2011, and who do not purchase a page will have their company names listed in the 125 year anniversary publication.

